

# K-12 Education in Louisiana

House Committee on Education  
Louisiana State Legislature  
May 5, 2009

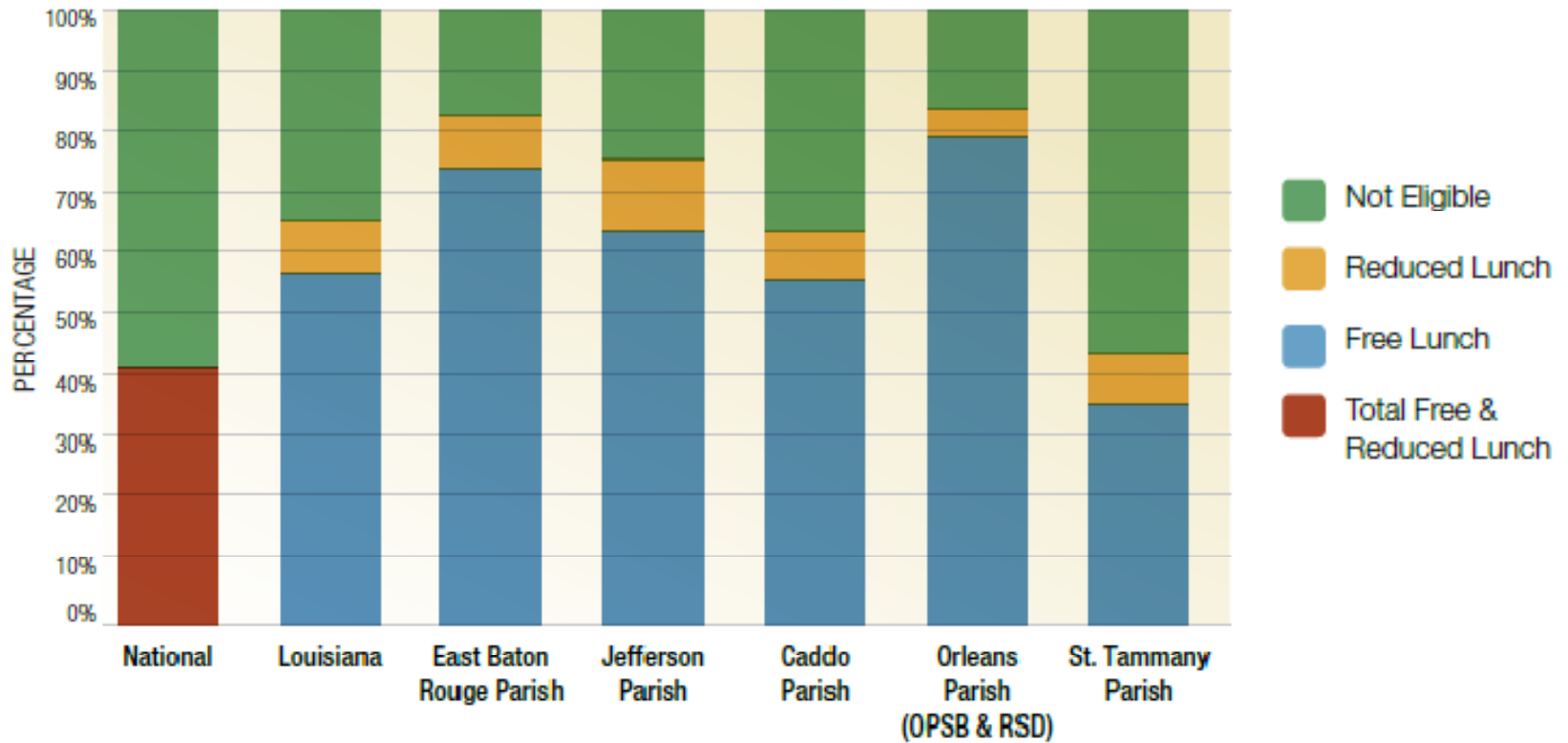
# Governance, Demographics, and Enrollment

# Basic Facts

K-12 Student Enrollment	<b>690,340</b>
Charter School Enrollment	<b>26,093</b>
Percent Receiving Free or Reduced Lunch	<b>65%</b>

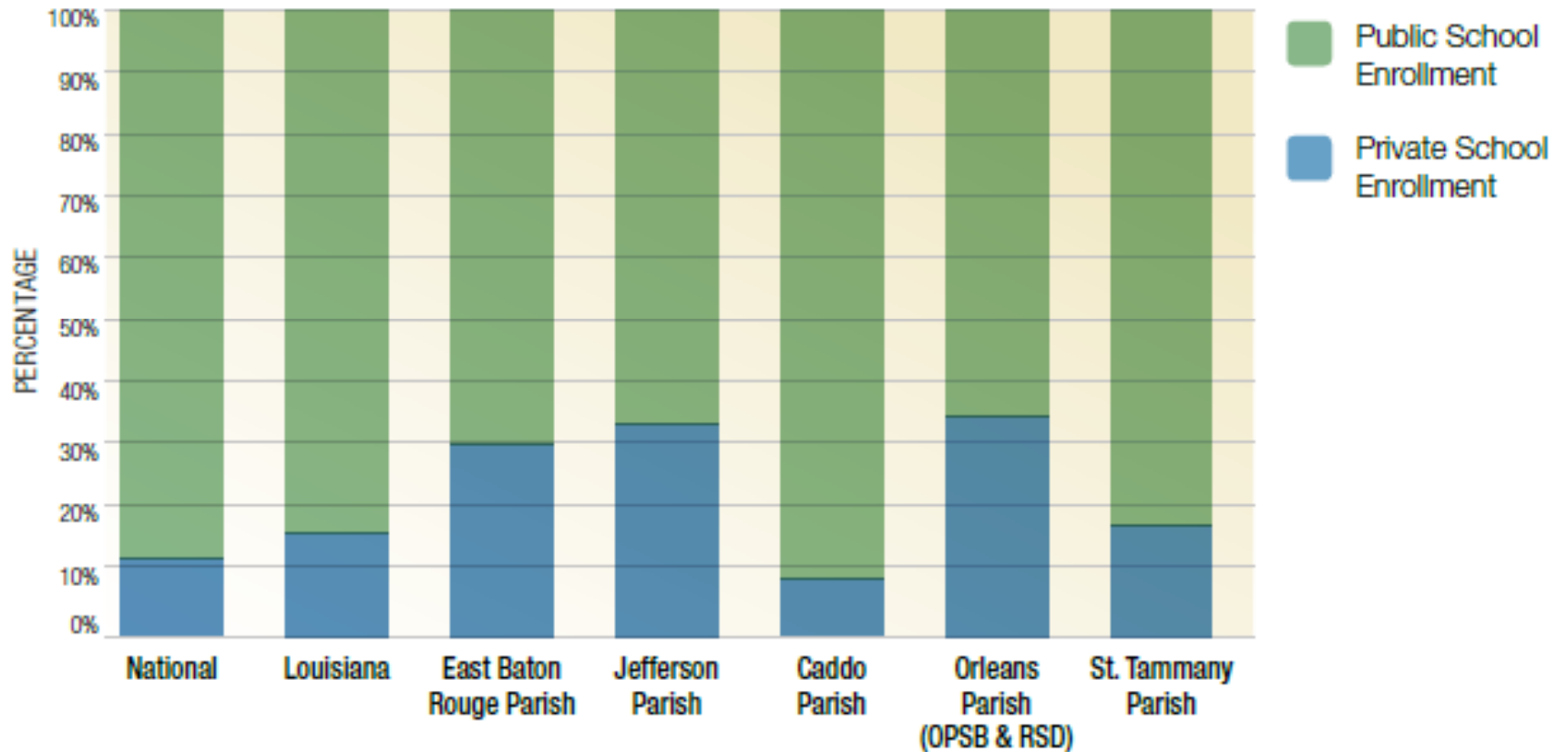
# Student Demographics: Poverty Level

Nationally, 41% of public school students are eligible for free and reduced lunch. In Louisiana and most of its largest districts, this percentage is considerably higher.



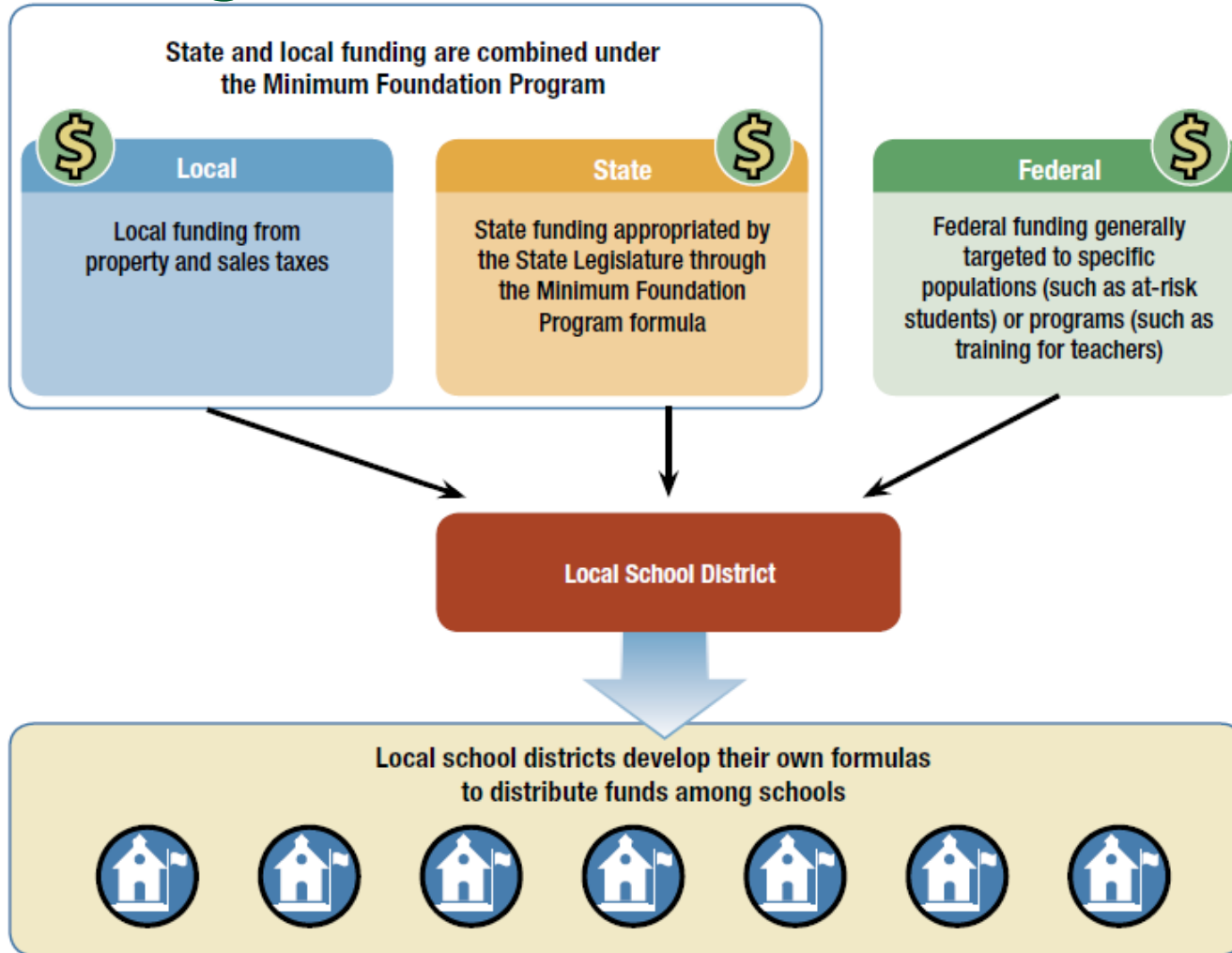
# Private School Enrollment

Significantly more parents send their children to private schools in Louisiana than in the rest of the nation.



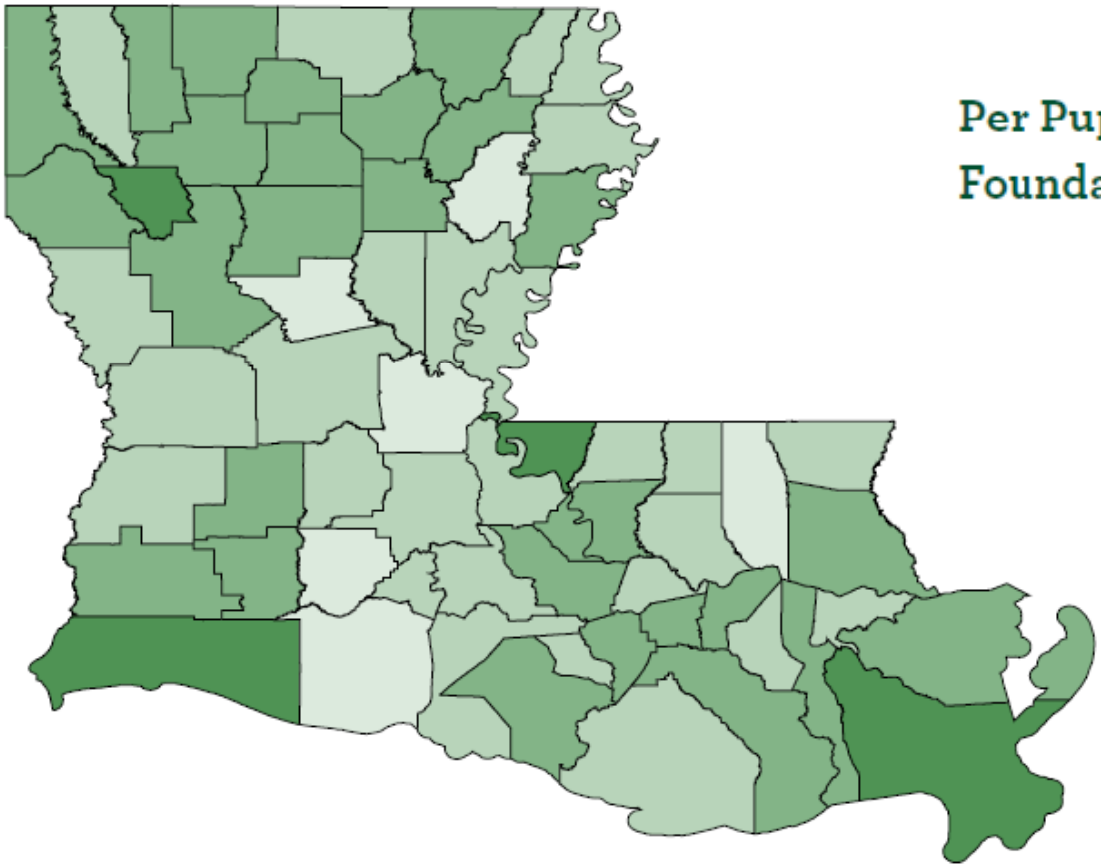
# Funding Public Schools

# Funding Structure



# MFP Per Pupil by District

Though Louisiana's average per pupil spending is near the national average, this amount varies significantly by district.

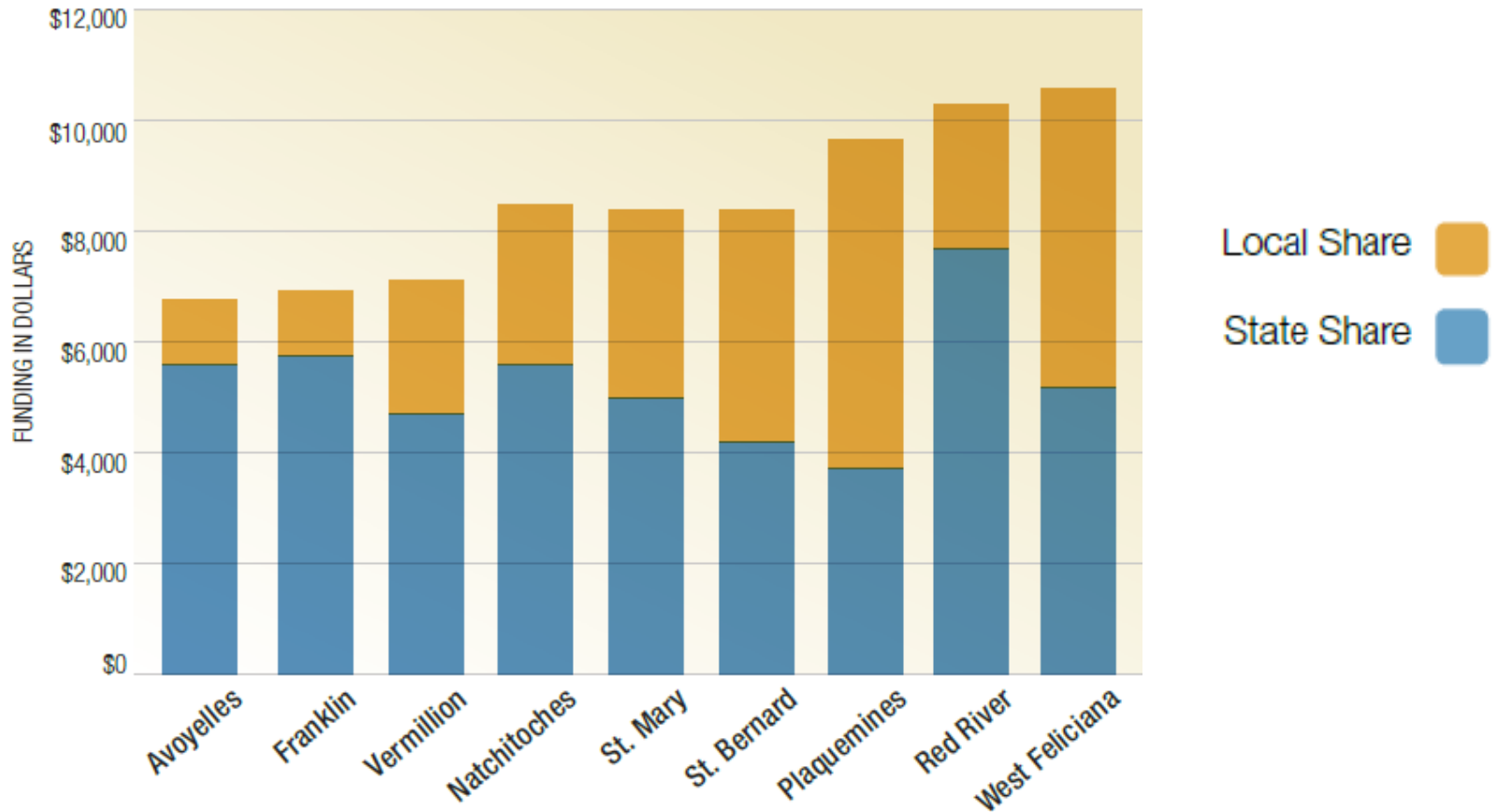


Per Pupil Funding under the Minimum Foundation Program (2008-2009)

- \$6,500 - \$7,500
- \$7,501 - \$8,500
- \$8,501 - \$9,500
- \$9,501 - \$10,700

# MFP Per Pupil by Parish

State and local share of MFP for the districts that have the lowest, middle, and highest amounts of per pupil funding.



# School Performance

# School Performance Scores

SPS scores are based primarily on student performance on standardized tests, as well as on dropout rates and attendance

## Louisiana Standardized Tests

---

- LEAP** Louisiana Educational Assessment Program – administered in grades 4 and 8
- iLEAP** General skills test used to rank students against the skill levels of students across the country – administered in grades 3, 5, 6, 7, and 9
- GEE** Graduate Exit Exam – administered in grades 10 and 11

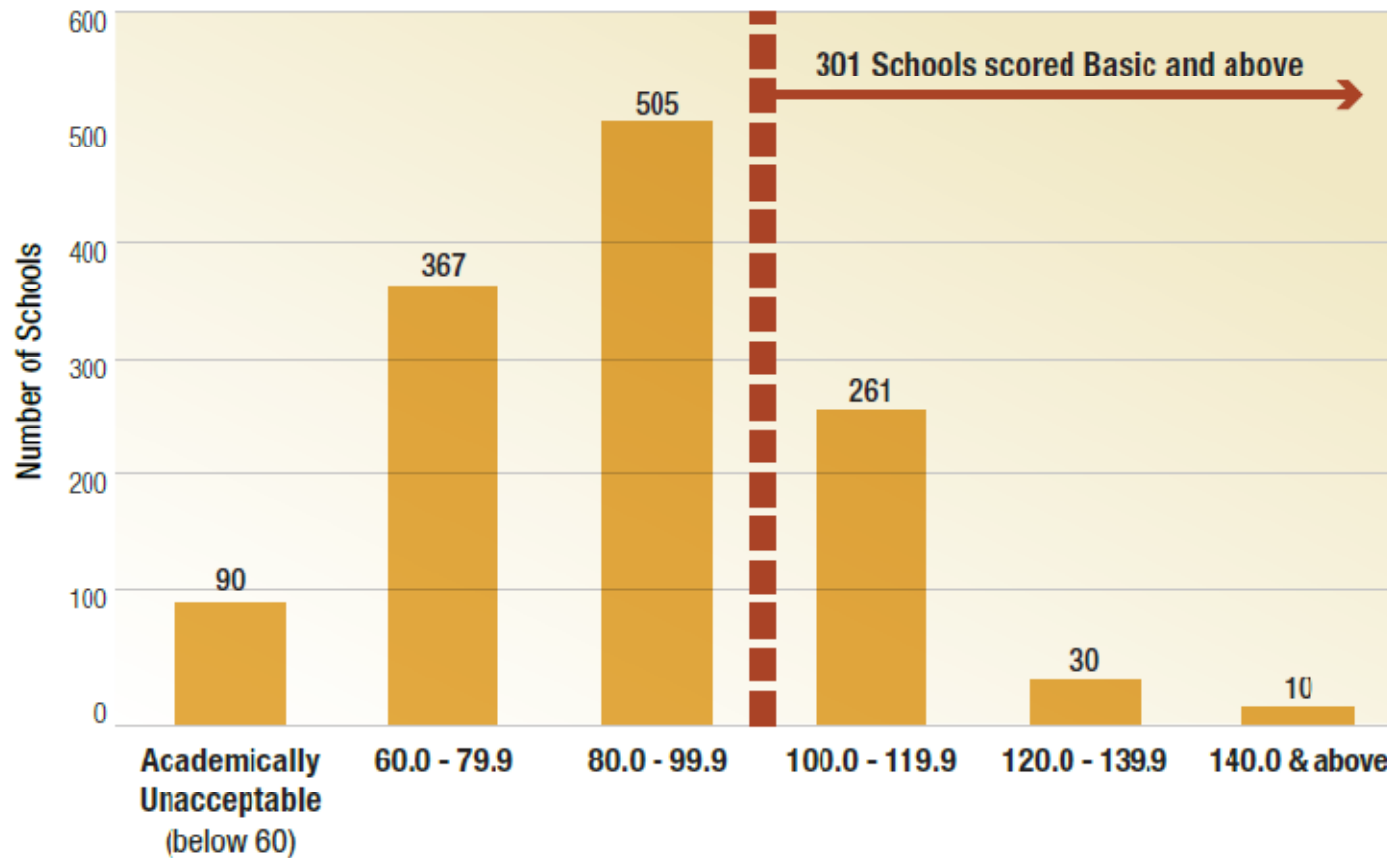
# School Performance Levels

A school with a school performance score of 100 has students performing at the Basic level, on average.

Advanced.....	200
Mastery .....	150
Basic .....	100
Approaching Basic .....	50
Unsatisfactory.....	0

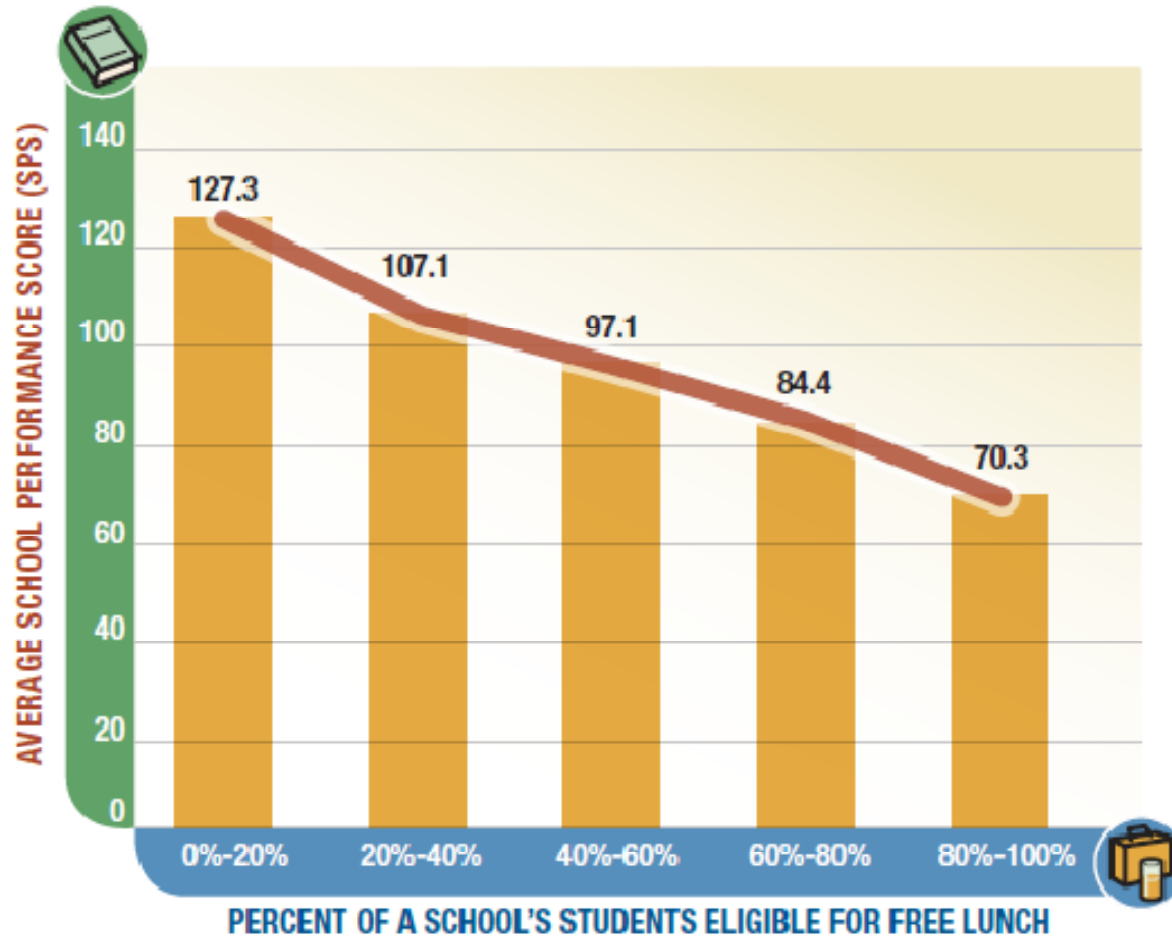
# 2008 School Performance Levels

301 out of 1,263 schools in Louisiana scored at the Basic level or above in the state's accountability program.



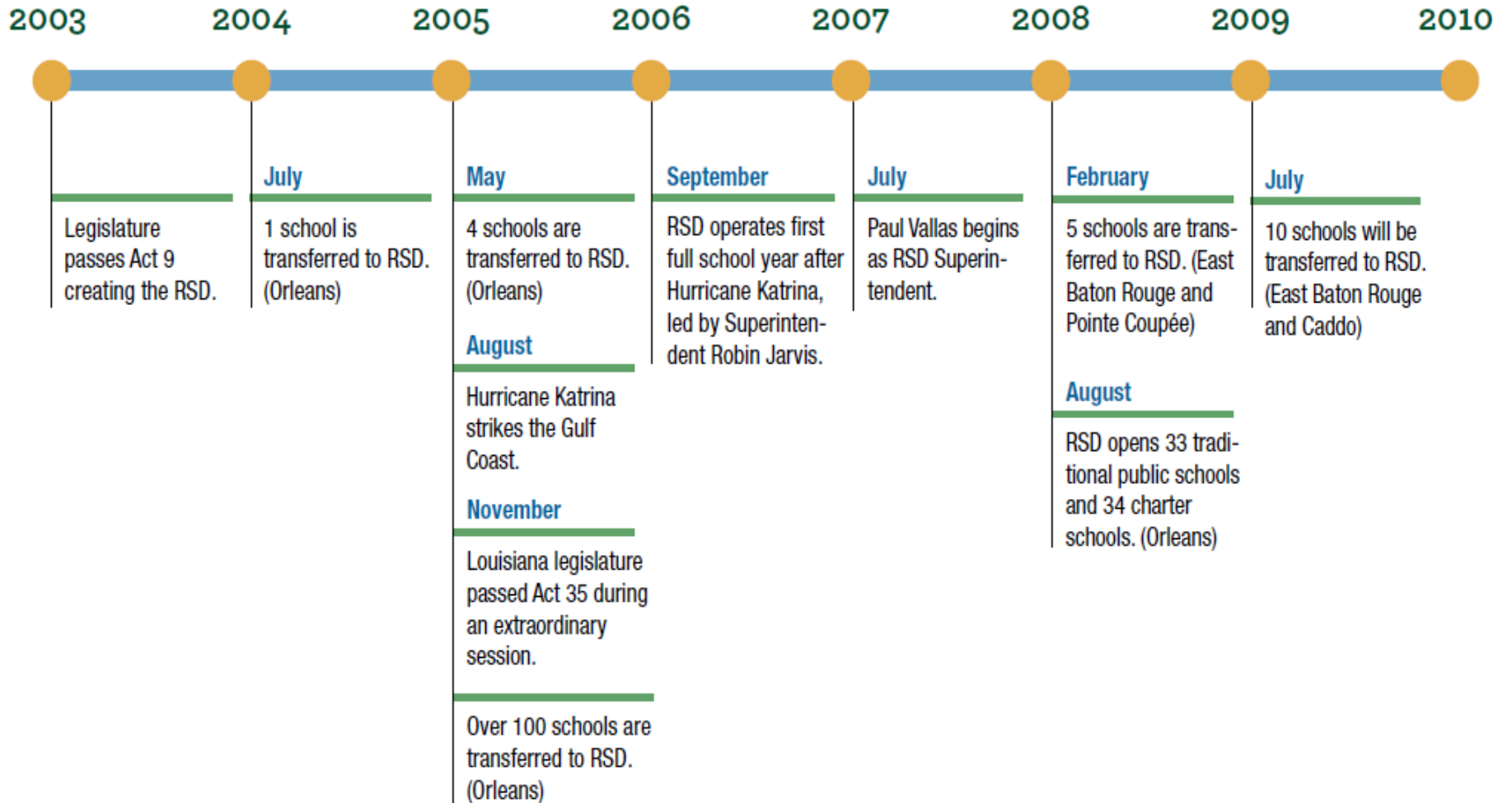
# Poverty & Student Achievement

2005 Poverty Levels and School Performance in Louisiana



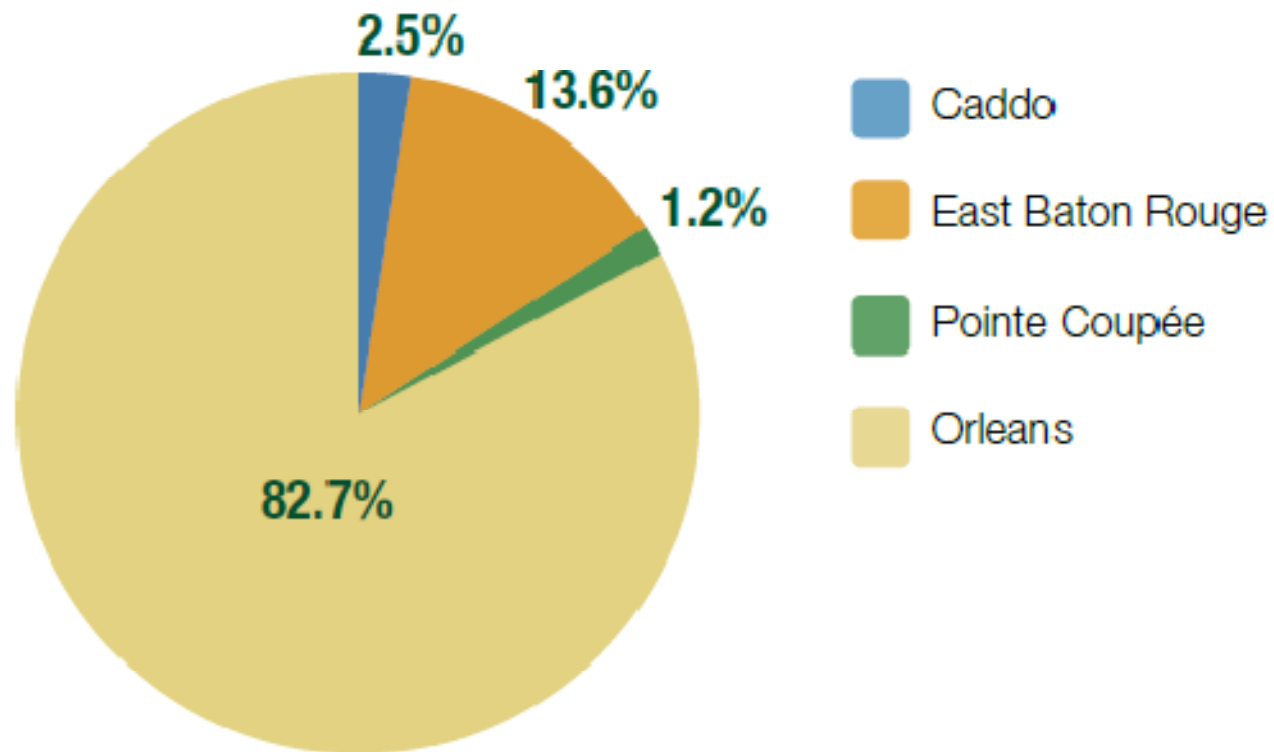
# Recovery School District

# RSD Timeline

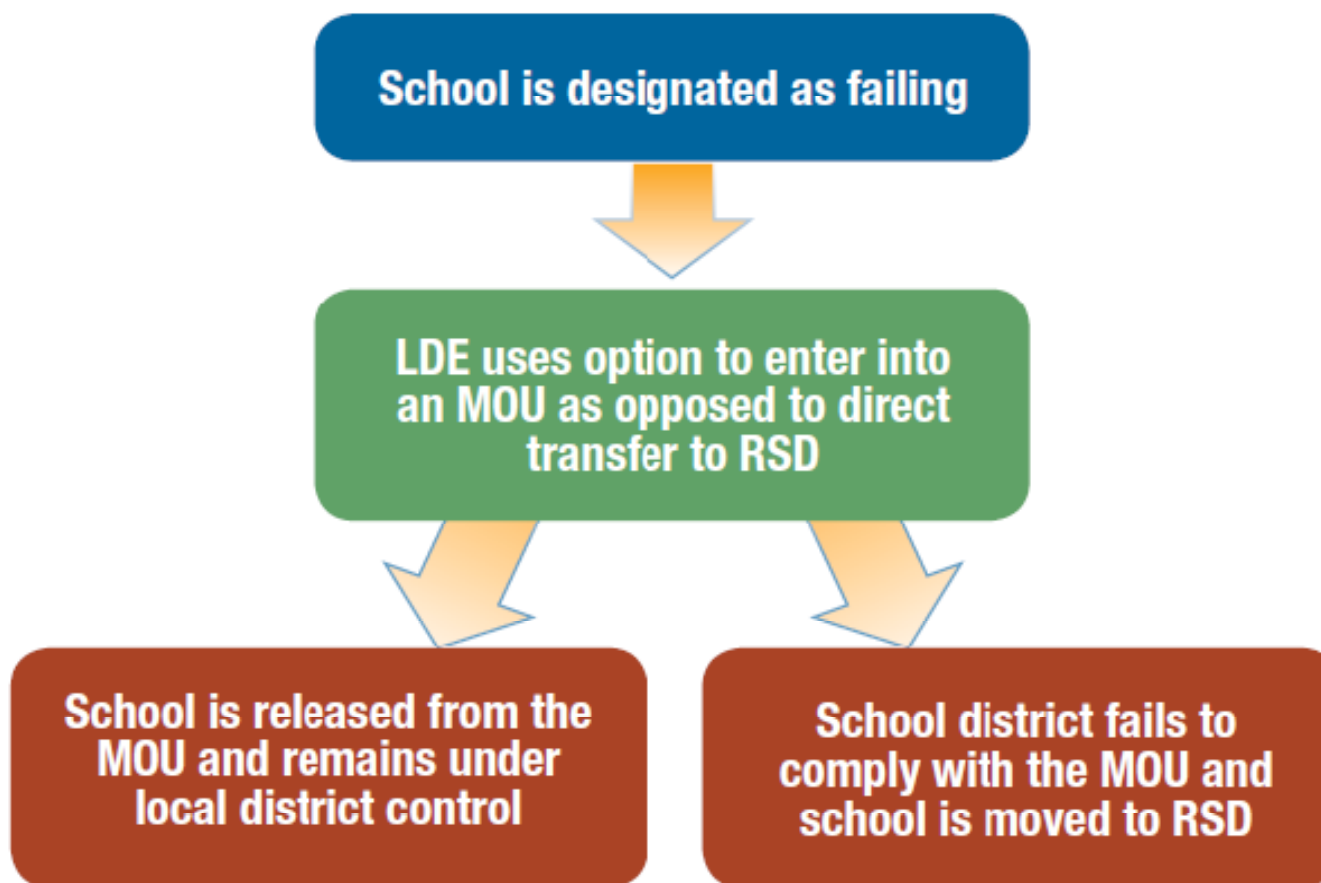


# School Districts in the RSD

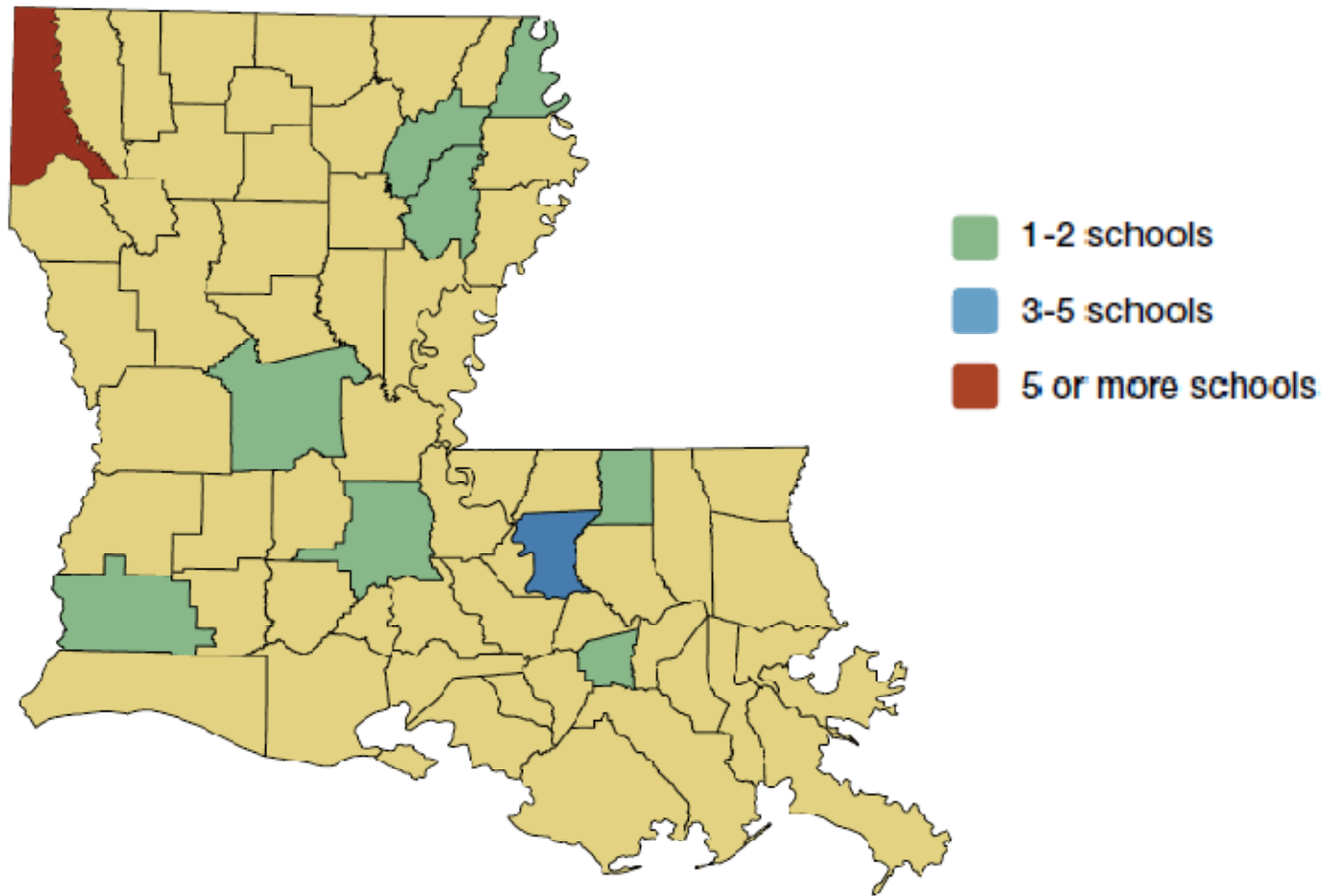
Since the creation of the Recovery School District, over 120 schools have been taken over statewide.



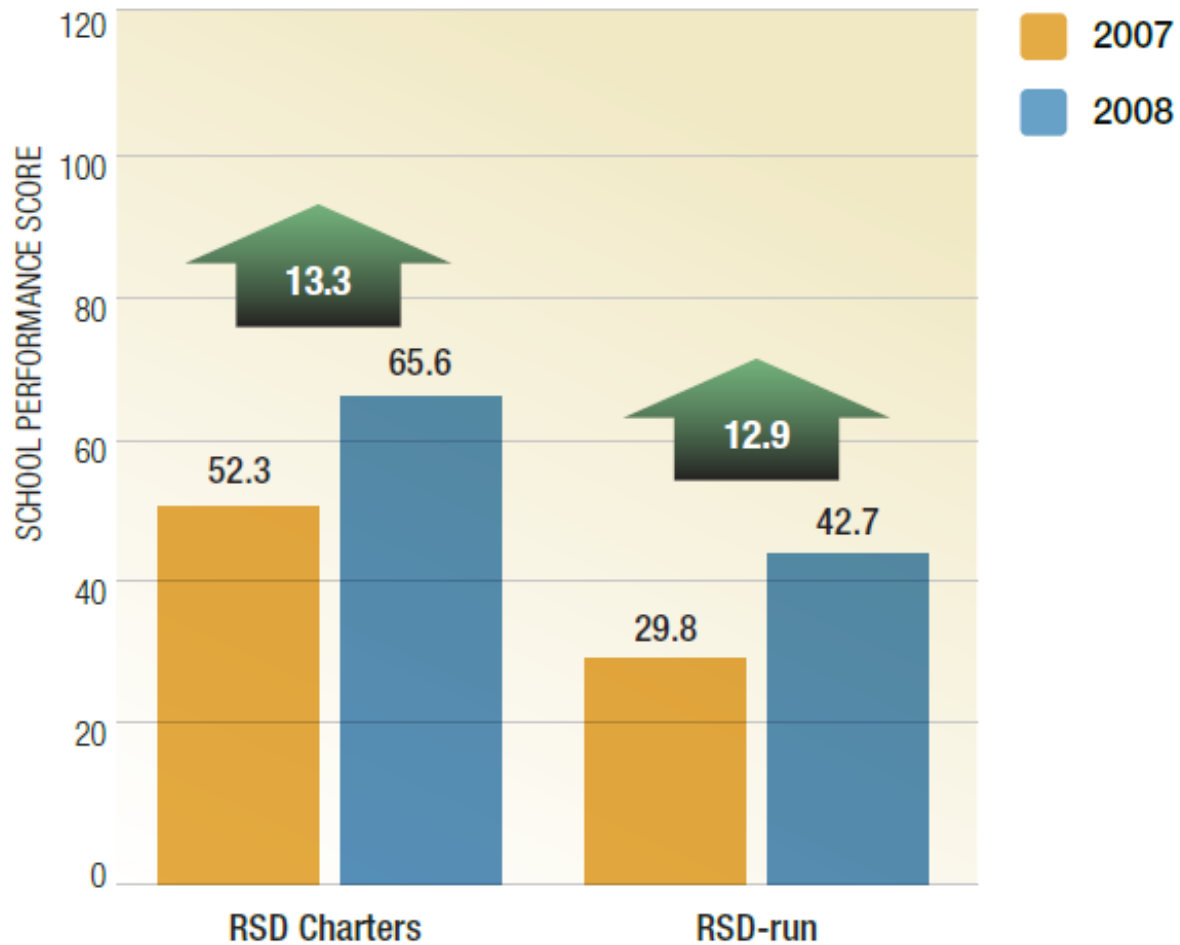
# RSD Memorandum of Understanding



# Districts Under MOU for 2009



# RSD Performance in New Orleans



# Charter Schools

# Charter School Governance

## Charter School Authorizer

- Enters into a contract with the charter school operator
- Includes BESE and local school boards
- Approve, monitor, and hold schools accountable
- Renew or end charters based on school performance

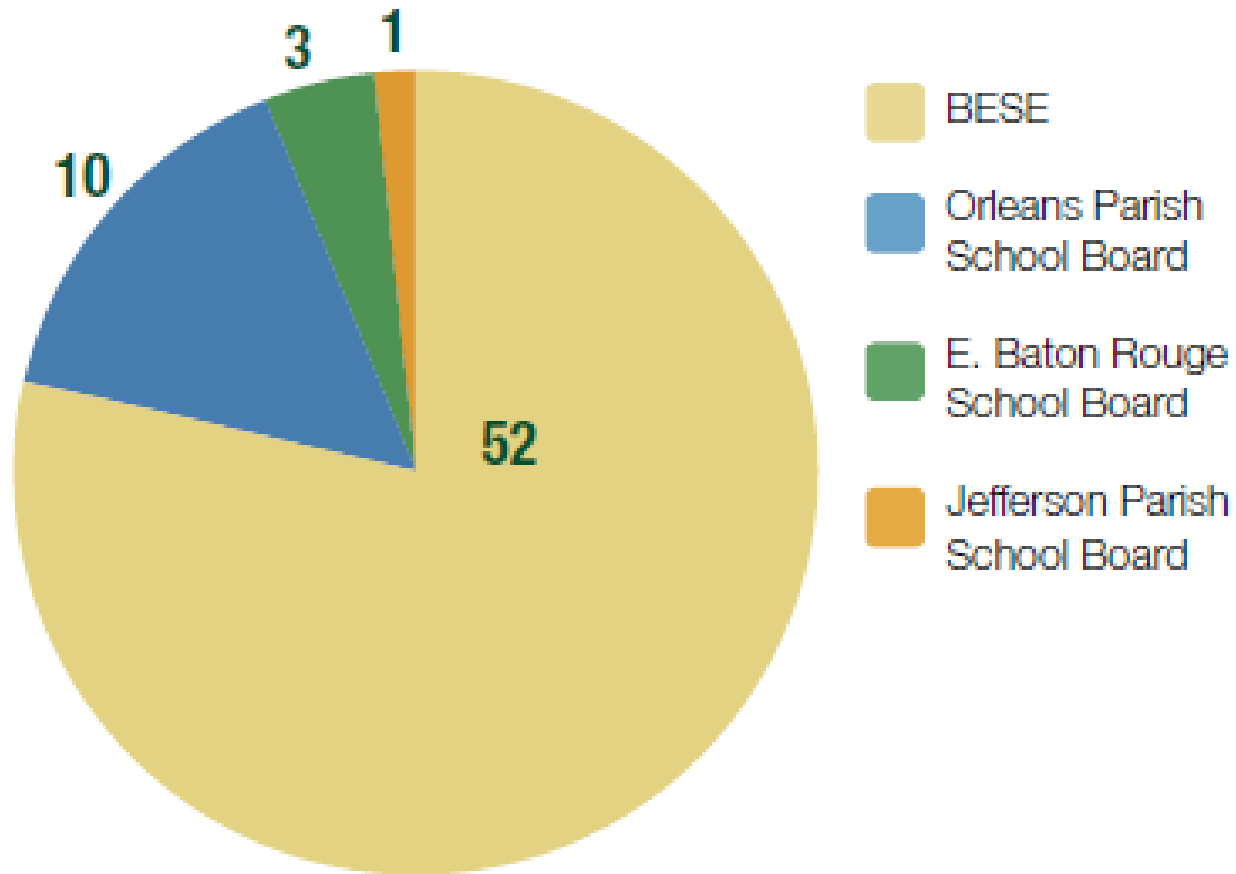
## Charter School Operator

- Oversees operations, finances, and administration
- Led by a board which sets policy and hires a school leader

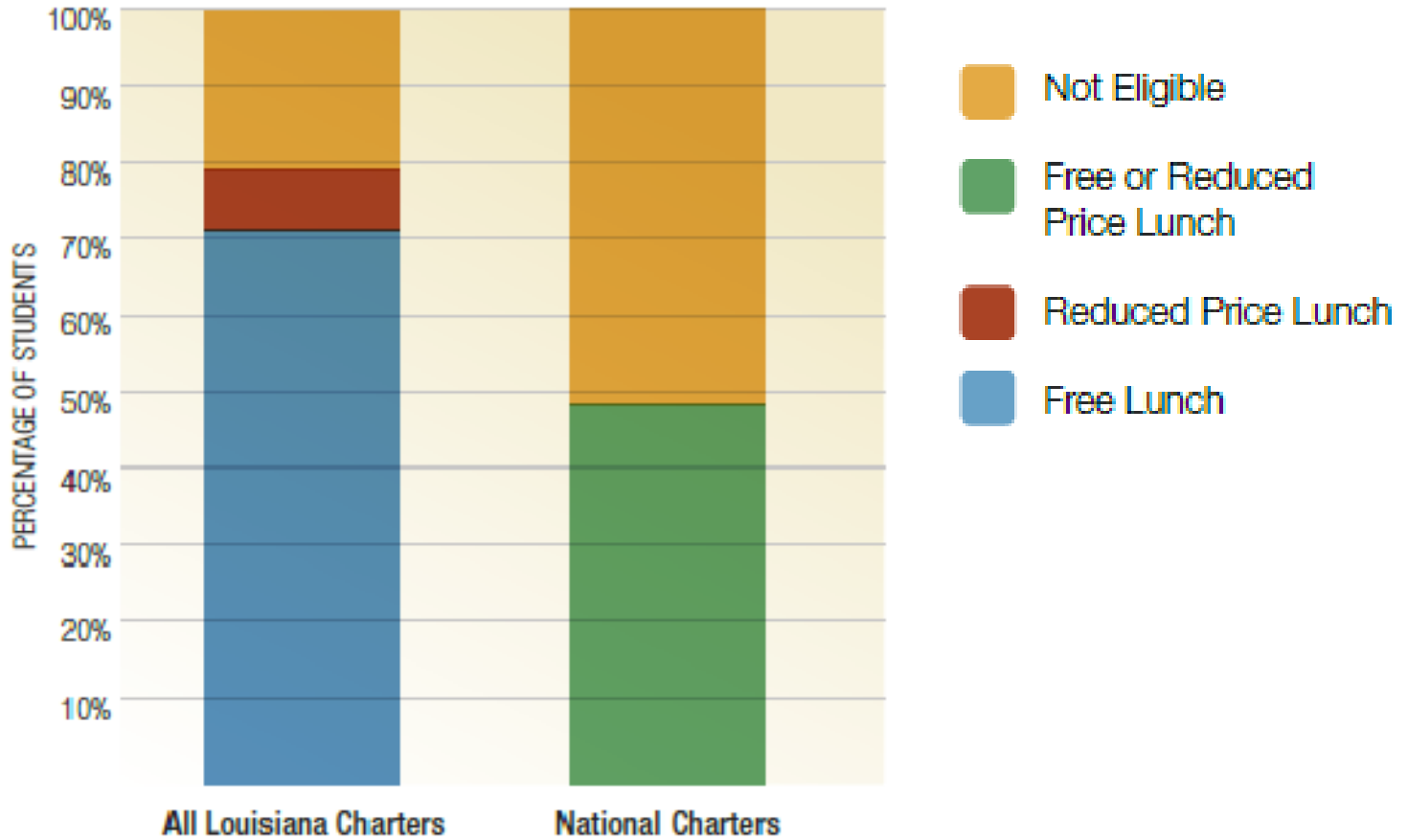
## Charter School Leader

- Hired by the school's operator
- Oversees daily operations, including budgeting, personnel, and curriculum decisions
- May or may not also fill the role of principal

# Charter Schools by Authorizer

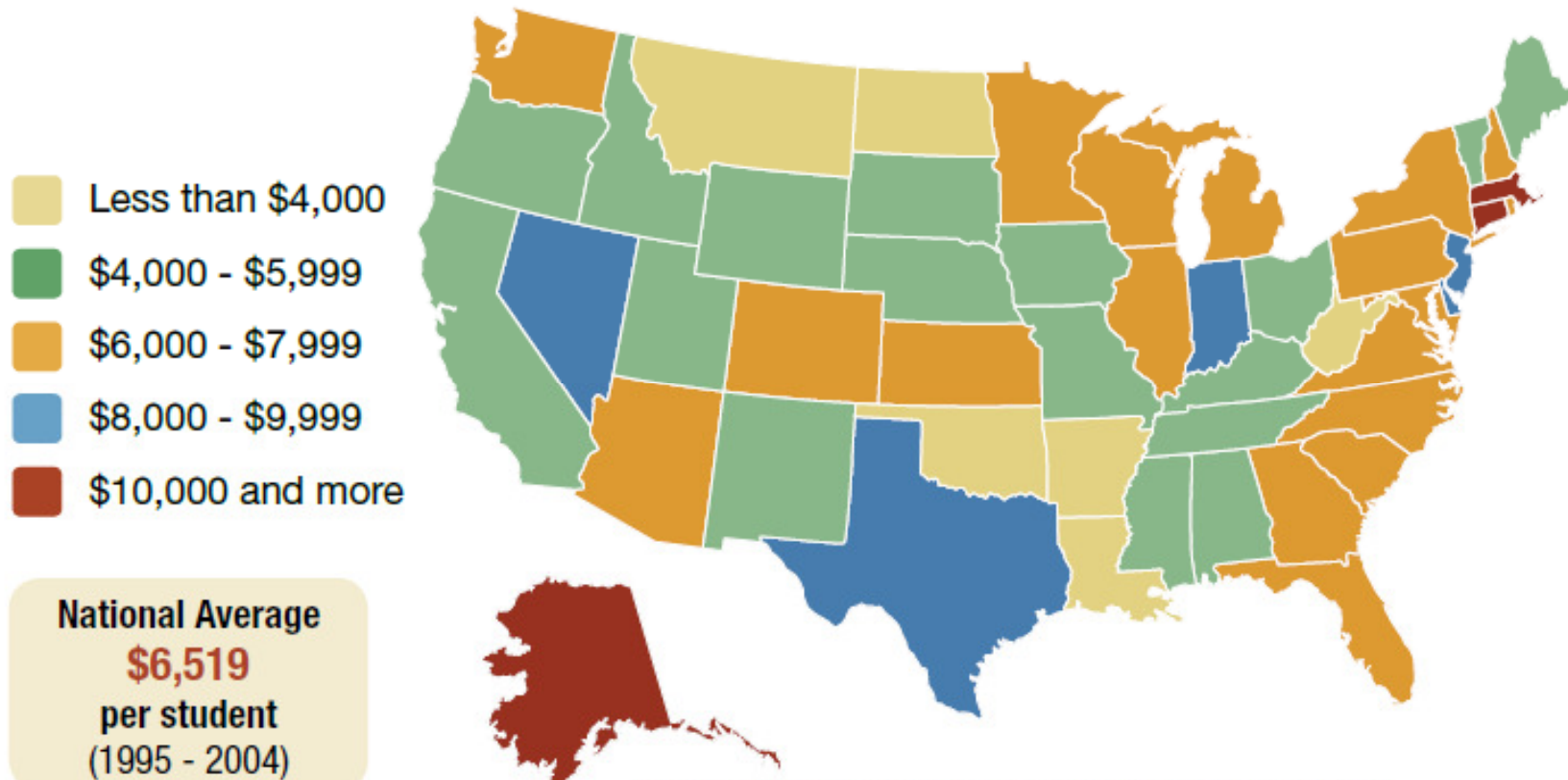


# Charter School Demographics: Poverty Level



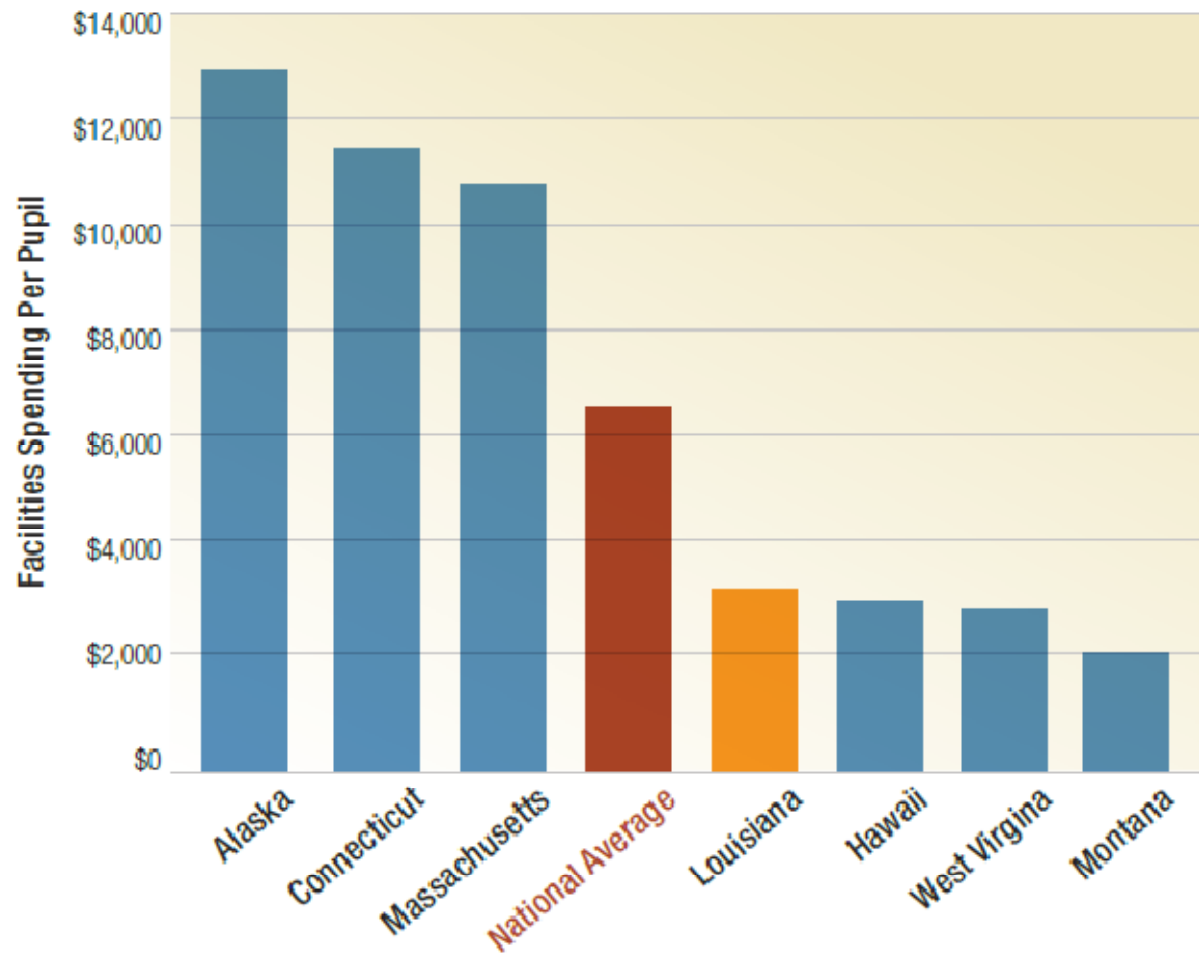
# Public School Facilities

# Facilities Construction Expenditures Per Student

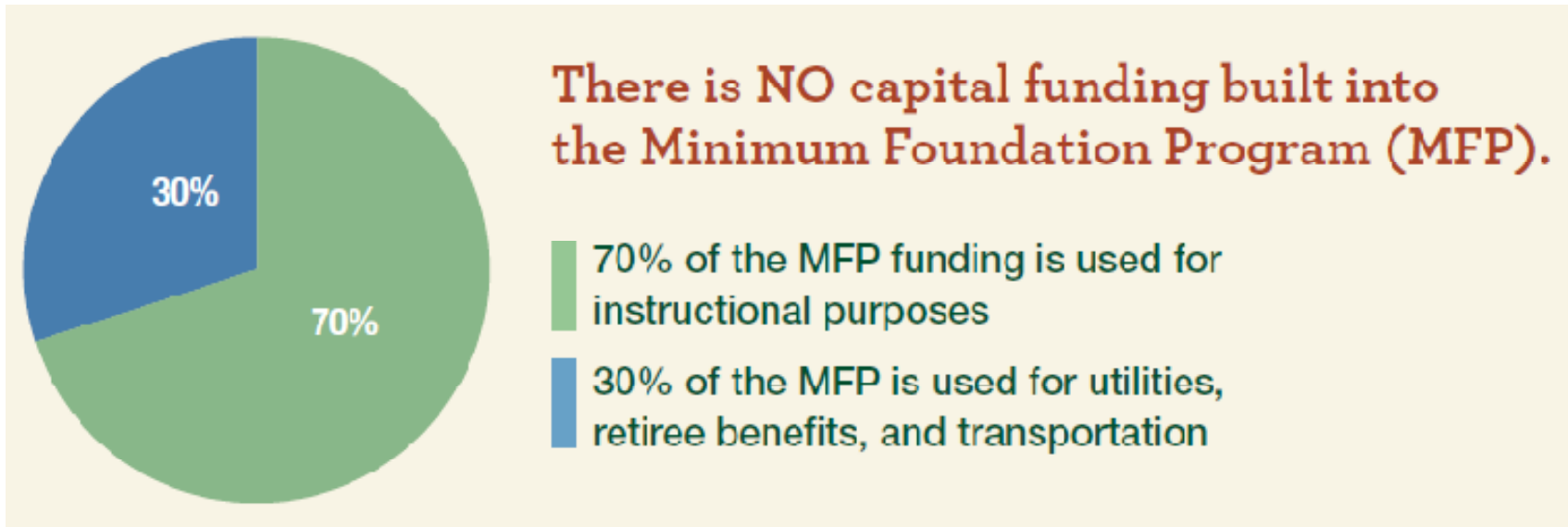


Source: Growth & Disparity: A Decade of US Public School Construction, Building Educational Success Together (BEST-2006)

# State Spending on School Facilities



# Facilities Funding in Louisiana



# Facilities Funding Needs per Student

States	Per Pupil Need
Hawaii	\$18,373
<b>Louisiana, South Carolina</b>	<b>\$10,070</b>
Arkansas, Iowa, Kansas, Missouri, Nebraska	\$9,726
North Carolina, Virginia	\$7,086
Alabama, Mississippi	\$6,943
Alaska	\$5,834
Ohio, Michigan, Pennsylvania, Wisconsin	\$5,065
West Virginia, Idaho, North Dakota, South Dakota, Wyoming	\$4,257
California	\$3,943
Tennessee, Indiana, Oklahoma	\$3,807
Georgia, Florida	\$3,365
Texas	\$2,855
Kentucky	\$1,505

# Inadequate Facilities

Schools with 70% or more of their students qualifying for free or reduced lunch reported that 41% of their buildings were inadequate. Schools with fewer than 20% of their students qualifying for free or reduced lunch reported only 25.1% of their buildings as inadequate.



# K-12 Education in Louisiana

House Committee on Education  
Louisiana State Legislature  
May 5, 2009