



# NOLA by the Numbers: High-Stakes Testing, 2010-2011

May 2011

Scott S. Cowen Institute for  
Public Education Initiatives  
Tulane University  
200 Broadway Street, Suite 108  
New Orleans, Louisiana 70118  
504-274-3690  
<http://education.tulane.edu>

The Scott S. Cowen Institute for Public Education Initiatives at Tulane University launched the NOLA by the Numbers series in October 2010. This series aims to provide journalists, policymakers, community leaders, and the public with a timely and comprehensive report of state-released data on public schools in New Orleans. This report focuses on public school performance on state-administered high-stakes tests. This briefing, and others released by the Cowen Institute, can be found at <http://education.tulane.edu>.

In late May 2011, the Louisiana Department of Education released the results of the English Language Arts (ELA) and math Louisiana Educational Assessment Program (LEAP) tests and Graduation Exit Exam (GEE) tests, the high-stakes tests that Louisiana students take in the 4<sup>th</sup>, 8<sup>th</sup>, and 10<sup>th</sup> grades. For 4<sup>th</sup> and 8<sup>th</sup> graders, a performance level must be achieved on these tests to be promoted to the 5<sup>th</sup> and 9<sup>th</sup> grades. The GEE is taken by high school students and achieving a passing score in certain subjects is a requirement for graduation for students entering high school prior to 2010-2011. (The state is now moving toward end-of-course exams for high-schoolers.) The results place students in one of five levels: *Unsatisfactory*, *Approaching Basic*, *Basic*, *Mastery*, and *Advanced*. Students scoring at least *Basic* are considered to be meeting grade-level expectations. Though lower scores, in combination with a *Basic* score in ELA or math, can still allow students to be promoted or graduate, in this document we refer to passing as scoring at the *Basic* level or above on a particular test.

Overall, initial passage rates for all students at public schools in New Orleans ranged from 53.7 percent to 66.8 percent in 2011. This represents an increase in every subject and grade from 2010 levels.

## Fast Facts

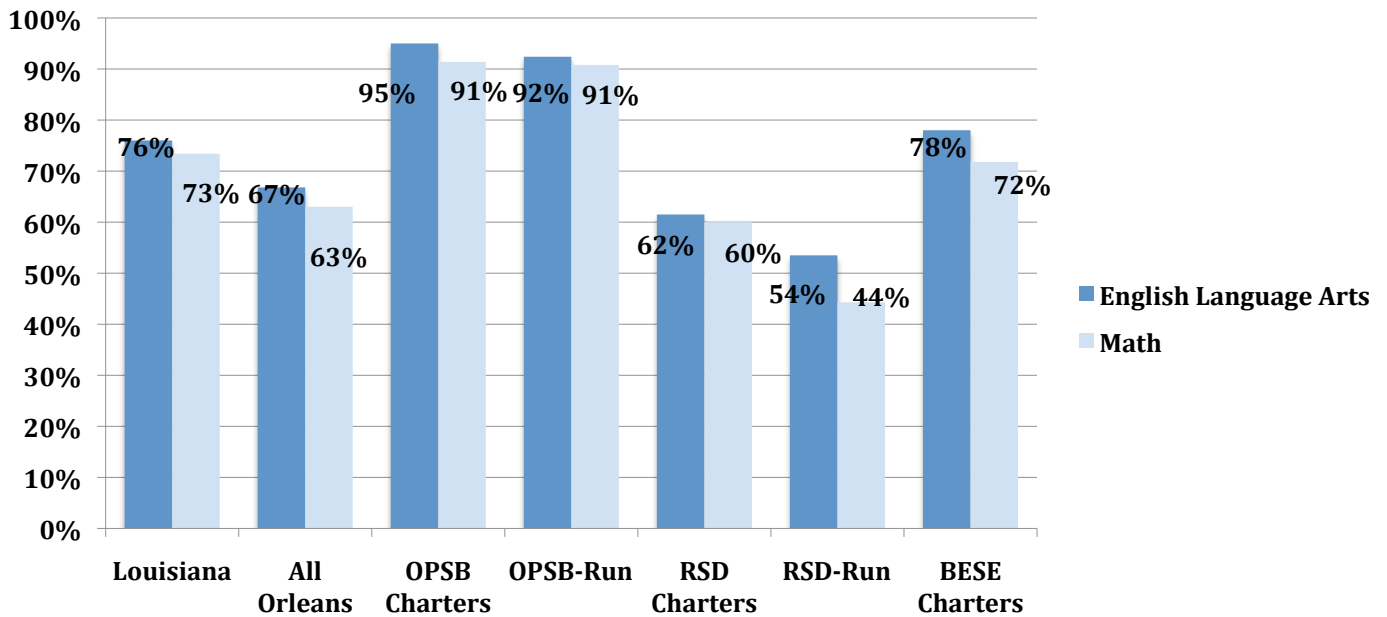
- **8<sup>th</sup> grade LEAP and 10<sup>th</sup> grade GEE passage rates in ELA and math were close to those of the 4<sup>th</sup> grade. Public schools in New Orleans are reversing the usual drop off in test passage rates that occurs among students in the upper grades.**
- **Public schools in New Orleans saw large gains in 8<sup>th</sup> grade passage rates, with an increase of 11.6 percentage points in ELA and 9.3 percentage points in math.**
- **Both the Recovery School District (RSD) and Orleans Parish School Board (OPSB) schools grew more than the state and other large school districts from 2007 to 2011 on all grades and subjects tested. While state growth averaged 6 percentage points, RSD schools grew 25 percentage points and OPSB schools grew 16.**
- **If New Orleans schools continue the rates of growth seen over the last four years, the percent of students passing high stakes tests will soon surpass the state average.**



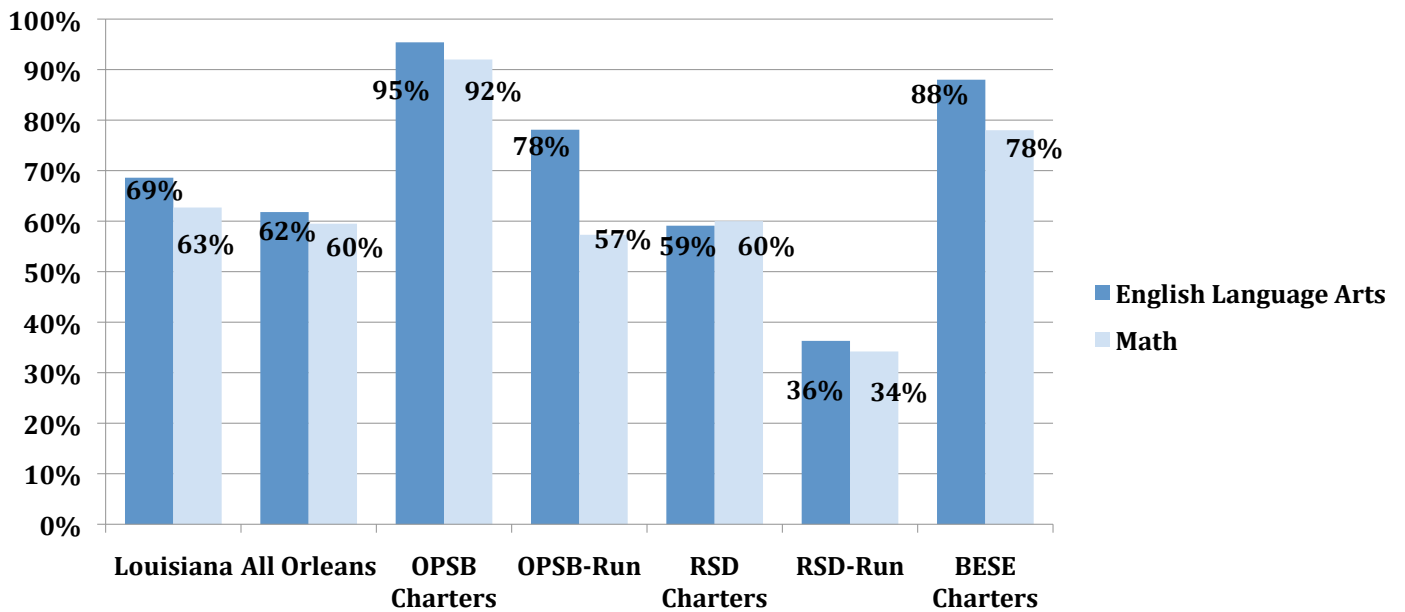
## Public School Performance on High-Stakes Tests

The graphs below show the percentage of first-time test-takers who scored at the *Basic* level or above in each test in 2011 for the entire state, all public schools in New Orleans, as well as each type of public school in New Orleans (i.e. OPSB-run or OPSB charter, RSD-run or RSD charter, and BESE-authorized Type 2 charters.)

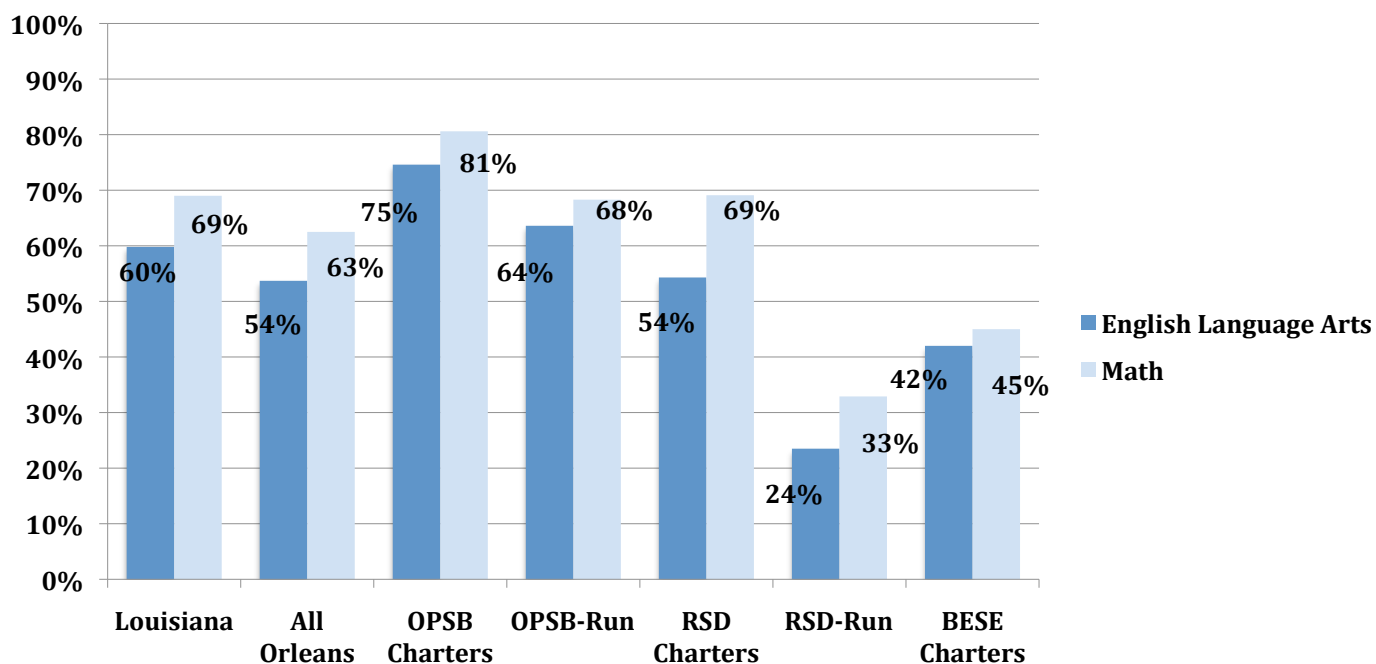
**Percentage of Students Scoring *Basic* and Above on the 2011 4th Grade LEAP**



**Percentage of Students Scoring *Basic* and Above on the 2011 8th Grade LEAP**



## Percentage of Students Scoring *Basic* and Above on the 2011 GEE



### Performance Growth and Declines, 2010-2011

Public schools in New Orleans, as a whole, made gains in passage rates from 2010 to 2011 in every grade and subject. In all but one instance (4<sup>th</sup> grade math) these gains were greater than gains made by the state as a whole. Growth in 4<sup>th</sup> grade math passage rates across the state averaged 2.3 percentage points while among New Orleans schools growth was 1.3 percentage points. Among New Orleans schools there were large jumps in the passage rates of 8<sup>th</sup> grade ELA and math (11.6 and 9.3 percentage points, respectively). High schools' student performance on the GEE across Louisiana declined 3.6 percentage points in math and 4.7 in ELA. However, high schools in New Orleans saw their GEE passage rates increase in both subjects, by 1.7 percentage points in ELA and 2.8 in math.

All school types showed growth in 4<sup>th</sup> grade ELA though there was significant variation, with an increase of 1.8 percentage points at RSD charters and 12.5 percentage points at RSD-run schools. OPSB-run, RSD-run, and RSD charter schools all saw declines in 4<sup>th</sup> grade math, ranging from 1.2 to 3.5 percentage points. BESE charters saw an increase of 4.1 percentage points in 4<sup>th</sup> grade math and OPSB charters increased passage rates by 5.6 points.

All school types saw across the board increases in 8<sup>th</sup> grade ELA, ranging from 5.1 percentage points at OPSB charters to 11.1 percentage points at BESE charters. There were smaller but still significant gains in 8<sup>th</sup> grade math at all but OPSB-run schools, which declined 0.6 percentage points. Math gains ranged from 3.3 to 6.6 percentage points at RSD-run, OPSB-run, and OPSB charter schools. BESE charter schools also showed the largest gains in 8<sup>th</sup> grade math at 19.2 percentage points.

On the ELA portion of the GEE, OPSB-run, and RSD and OPSB charters showed gains that ranged from 2.2 percentage points to 6.6 percentage points. These school types also saw increases in GEE math, ranging from 1.4 to 7.5 percentage points. Passage rates at RSD-run schools held steady in ELA and declined somewhat in math.

The table on the following page shows the 2010 and 2011 test passage rates for each subject and grade for the entire state and city, as well as by school type. Changes in passage rates from 2010 to 2011 are noted.

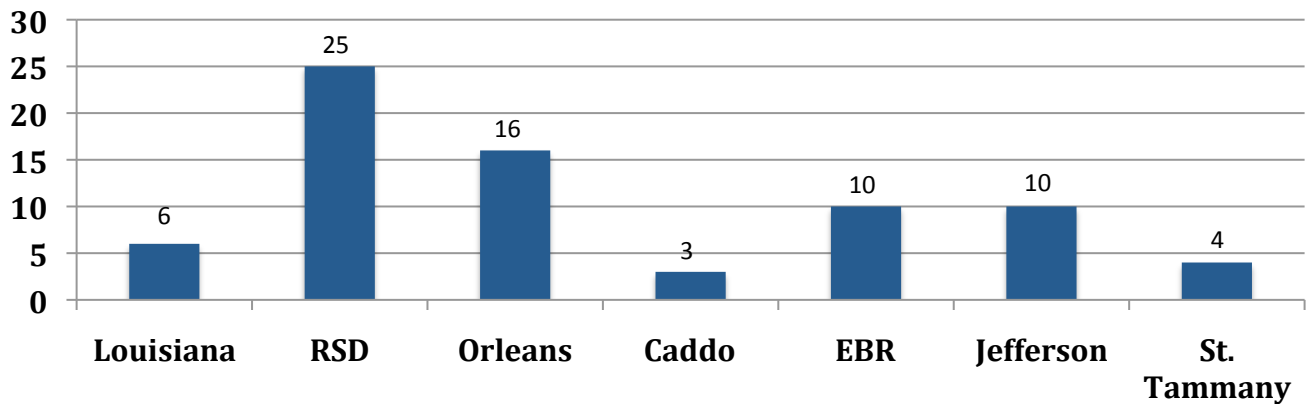
## Percentage of Students Passing and Change in Test Passage Rates, 2010 to 2011

	4 <sup>th</sup> Grade ELA	4 <sup>th</sup> Grade Math	8 <sup>th</sup> Grade ELA	8 <sup>th</sup> Grade Math	10 <sup>th</sup> Grade GEE ELA	10 <sup>th</sup> Grade GEE Math
<b>2010 LA State Wide</b>	71.0%	71.1%	63.2%	60.7%	64.5%	72.6%
<b>2011 LA State Wide</b>	76.0%	73.4%	68.6%	62.7%	59.8%	69.0%
<b>2010 to 2011 Change</b>	5.0%	2.3%	5.4%	2.0%	-4.7%	-3.6%
<b>2010 All NOLA Schools</b>	58.6%	61.7%	50.2%	50.2%	52.0%	60.7%
<b>2011 All NOLA Schools</b>	66.8%	63.0%	61.8%	59.5%	53.7%	62.5%
<b>2010 to 2011 Change</b>	8.2%	1.3%	11.6%	9.3%	1.7%	1.8%
<b>2010 OPSB Charters</b>	86.5%	85.8%	90.3%	88.7%	72.4%	75.8%
<b>2011 OPSB Charters</b>	95.0%	91.4%	95.4%	92.0%	74.6%	80.6%
<b>2010 to 2011 Change</b>	8.5%	5.6%	5.1%	3.3%	2.2%	4.8%
<b>2010 OPSB-run</b>	86.6%	92.0%	67.0%	57.9%	59.5%	66.9%
<b>2011 OPSB-run</b>	92.4%	90.8%	78.1%	57.3%	63.6%	68.3%
<b>2010 to 2011 Change</b>	5.8%	-1.2%	11.1%	-0.6%	4.1%	1.4%
<b>2010 RSD Charters</b>	59.7%	63.5%	52.0%	54.7%	47.7%	61.6%
<b>2011 RSD Charters</b>	61.5%	60.0%	59.1%	60.0%	54.3%	69.1%
<b>2010 to 2011 Change</b>	1.8%	-3.5%	7.1%	5.3%	6.6%	7.5%
<b>2010 RSD-run</b>	41.1%	45.5%	27.3%	27.6%	23.5%	34.6%
<b>2011 RSD-run</b>	53.6%	44.3%	36.3%	34.2%	23.5%	32.9%
<b>2010 to 2011 Change</b>	12.5%	-1.2%	9.0%	6.6%	0.0%	-1.7%
<b>2010 BESE Charters</b>	69.9%	67.7%	80.4%	58.8%	NA	NA
<b>2011 BESE Charters</b>	78.0%	71.8%	88.0%	78.0%	42.0%	45.0%
<b>2010 to 2011 Change</b>	8.1%	4.1%	7.6%	19.2%	NA	NA

## Test Performance in the Post-Katrina Years

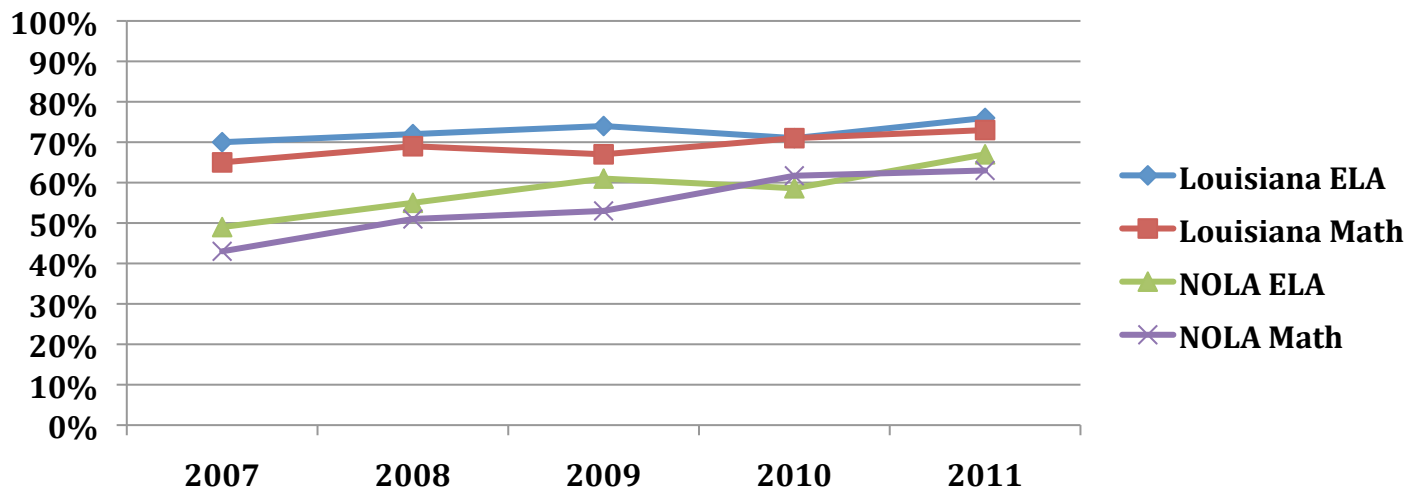
While the data on changes in performance from 2010 to 2011 are significant, the growth that schools have made from the first full school year after Katrina (2006-2007) to the present one (2010-2011) may be more valuable, as it shows longer term trends and is not vulnerable to the minor year-to-year disruptions inevitable in a school system that is continuously evolving. The graph below shows the overall growth of the state, the Recovery School District in New Orleans, and the largest parishes over the last four years. As the graphs below show, both the RSD and Orleans Parish outgrew the state during that time, as well as the four other largest school districts in Louisiana – Caddo, East Baton Rouge, Jefferson and St. Tammany.

### Percentage Point Increase of Students Scoring Basic and Above on All State Standardized Tests, 2007 to 2011

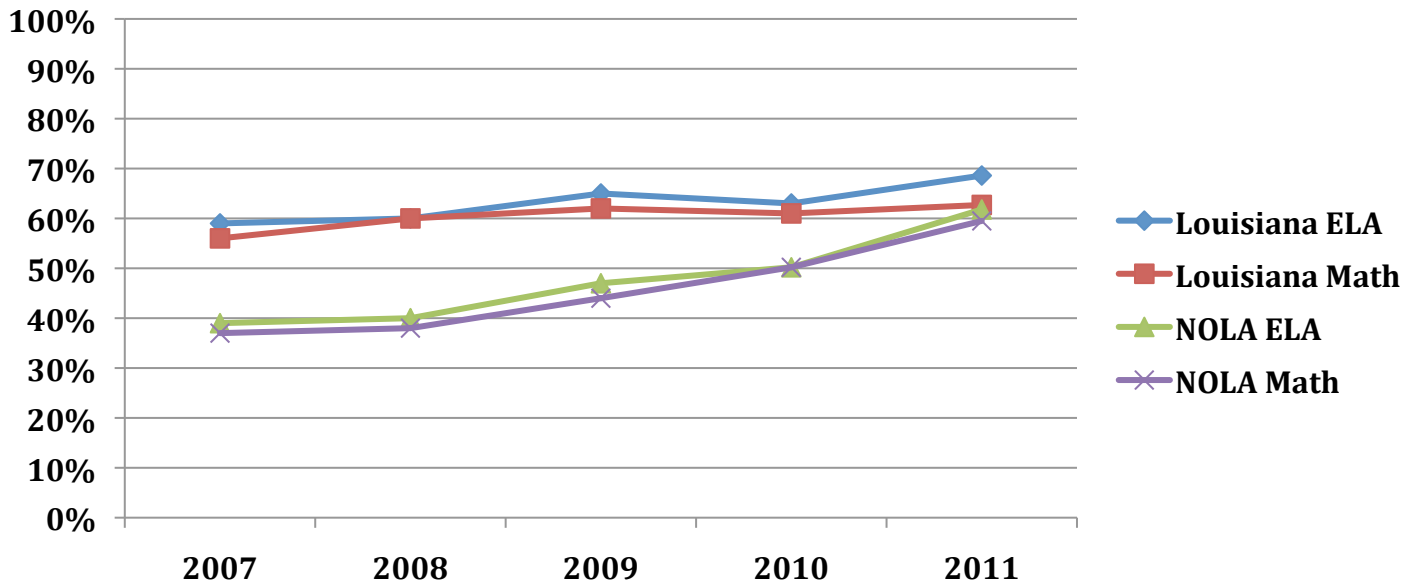


New Orleans schools as a whole (OPSB, RSD, and BESE) are gaining at a much greater rate than the state, double or triple the number of percentage points on some tests. As a result, the historical achievement gap between the state and the city is narrowing and in some cases is nearly closed. The following graphs show the growth in high stakes test passage rates over time for Louisiana and New Orleans by grade and subject.

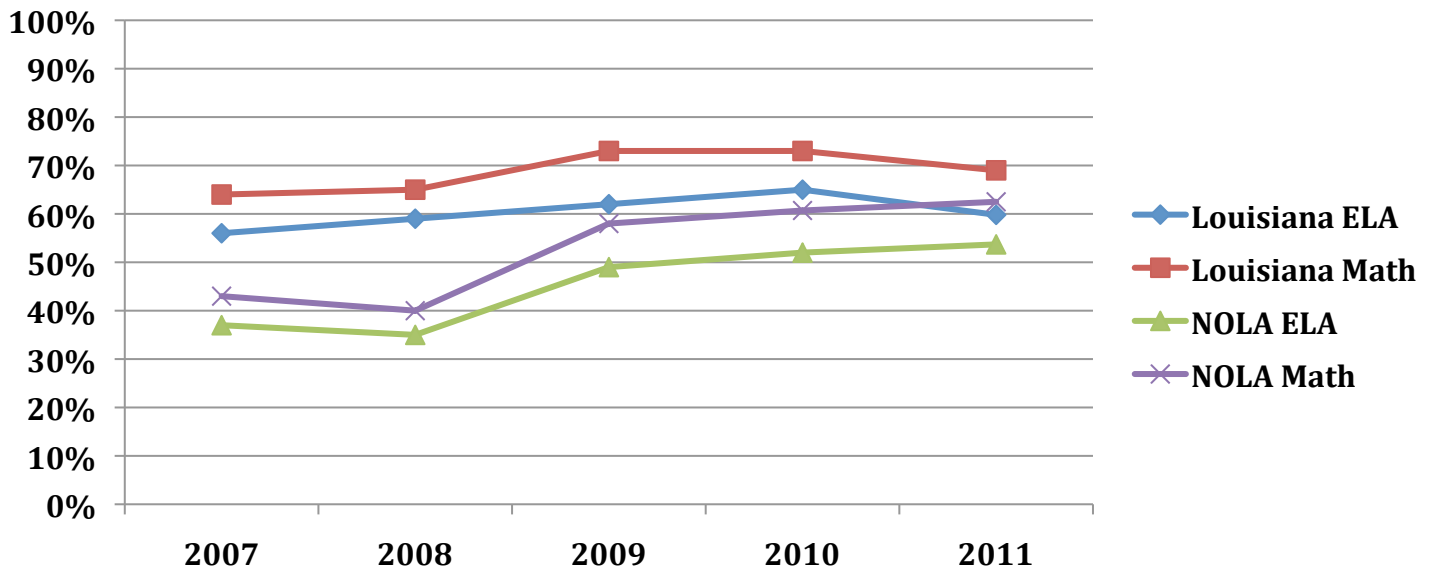
### 4<sup>th</sup> Grade LEAP Performance, 2007 to 2011



### 8<sup>th</sup> Grade LEAP Performance, 2007 to 2011



### GEE Performance, 2007 to 2011



## Appendix

---

<b>Performance Level</b>	<b>Definition</b>
<b>Advanced</b>	<b>A student at this level has demonstrated superior performance beyond the level of mastery.</b>
<b>Mastery</b>	<b>A student at this level has demonstrated competency over challenging subject matter and is well prepared for the next level of schooling.</b>
<b>Basic</b>	<b>A student at this level has demonstrated only the fundamental knowledge and skills needed for the next level of schooling.</b>
<b>Approaching Basic</b>	<b>A student at this level has only partially demonstrated the fundamental knowledge and skills needed for the next level of schooling.</b>
<b>Unsatisfactory</b>	<b>A student at this level has not demonstrated the fundamental knowledge and skills needed for the next level of schooling.</b>

<b>School Name</b>	<b>4<sup>th</sup> Grade ELA Basic and Above</b>	<b>4<sup>th</sup> Grade Math Basic and Above</b>
A.P. Tureaud Elementary School	79%	57%
Abramson Science & Technology Charter School	53%	49%
Alice Harte Elementary Charter School	91%	90%
Andrew H. Wilson Charter School	50%	55%
Arthur Ashe Charter School	71%	75%
Audubon Charter School	96%	92%
Batiste Cultural Arts Academy At Live Oak Elementary	41%	39%
Benjamin Banneker Elementary School	70%	68%
Benjamin Franklin Elem. Math And Science	93%	92%
Carver Elementary School	46%	36%
Crocker Arts And Technology School	64%	40%
Dr. Charles Richard Drew Elementary School	30%	23%
Dr. M.L.K. Charter School For Science & Technology	88%	86%
Dwight D. Eisenhower Elementary School	69%	55%
E. P. Harney Spirit Of Excellence Academy	70%	71%
Edward Hynes Charter School	100%	92%
Einstein Charter School	75%	69%
Esperanza Charter School	29%	35%
F.W. Gregory Elementary School	45%	47%
Fannie C. Williams Elementary School	61%	45%
Gentilly Terrace School	85%	74%
H.C. Schaumburg Elementary School	62%	48%
Harriet Tubman Elementary School	56%	53%
International School Of Louisiana	89%	93%
James M. Singleton Charter School	55%	61%
James Weldon Johnson School	65%	65%
John Dibert Community School	39%	42%
Joseph A. Craig School	38%	40%
KIPP McDonogh 15 School For The Creative Arts	66%	80%
KIPP New Orleans Leadership Academy	60%	50%
Lafayette Academy Of New Orleans	93%	91%
Lake Forest Elementary Charter School	100%	100%
Langston Hughes Academy Charter School	58%	58%
Lusher Charter School	100%	99%
Martin Behrman Elementary School	100%	96%
Mary Bethune Elementary Literature/Technology	94%	89%
Mary D. Coghill Elementary School	84%	72%
McDonogh #28 City Park Academy	68%	58%

<b>School Name</b>	<b>4<sup>th</sup> Grade ELA Basic and Above</b>	<b>4<sup>th</sup> Grade Math Basic and Above</b>
<b>McDonogh #32 Elementary School</b>	<b>36%</b>	<b>30%</b>
<b>McDonogh #42 Elementary Charter School</b>	<b>49%</b>	<b>45%</b>
<b>Milestone SABIS Academy Of New Orleans</b>	<b>66%</b>	<b>49%</b>
<b>Murray Henderson Elementary School</b>	<b>50%</b>	<b>40%</b>
<b>Nelson Elementary School</b>	<b>45%</b>	<b>52%</b>
<b>P. A. Capdau School</b>	<b>93%</b>	<b>66%</b>
<b>Paul B. Habans Elementary School</b>	<b>56%</b>	<b>38%</b>
<b>Robert Russa Moton Charter School</b>	<b>100%</b>	<b>83%</b>
<b>Samuel J. Green Charter School</b>	<b>60%</b>	<b>70%</b>
<b>Sarah Towles Reed Elementary School</b>	<b>34%</b>	<b>22%</b>
<b>Scitech Academy At Laurel Elementary</b>	<b>35%</b>	<b>42%</b>
<b>Success Preparatory Academy</b>	<b>51%</b>	<b>47%</b>
<b>The Intercultural Charter School</b>	<b>71%</b>	<b>65%</b>
<b>William J. Fischer Elementary School</b>	<b>69%</b>	<b>81%</b>

<b>School Name</b>	<b>8<sup>th</sup> Grade ELA Basic and Above</b>	<b>8<sup>th</sup> Grade Math Basic and Above</b>
Abramson Science & Technology Charter School	53%	34%
Alice Harte Elementary Charter School	93%	79%
Andrew H. Wilson Charter School	95%	70%
Arthur Ashe Charter School	60%	60%
Audubon Charter School	98%	90%
Batiste Cultural Arts Academy At Live Oak Elementary	29%	25%
Benjamin Banneker Elementary School	62%	68%
Carver Elementary School	30%	32%
Dr. Charles Richard Drew Elementary School	27%	41%
Dr. M.L.K. Charter School For Science & Technology	73%	93%
Dwight D. Eisenhower Elementary School	74%	64%
E. P. Harney Spirit Of Excellence Academy	60%	50%
Edward Hynes Charter School	97%	81%
Einstein Charter School	81%	81%
Eleanor McMain Secondary School	87%	67%
Esperanza Charter School	65%	50%
F.W. Gregory Elementary School	26%	24%
Fannie C. Williams Elementary School	67%	63%
Gentilly Terrace School	33%	27%
H.C. Schaumburg Elementary School	45%	29%
Harriet Tubman Elementary School	59%	44%
Hope Academy	12%	8%
International School Of Louisiana	95%	85%
James M. Singleton Charter School	69%	89%
James Weldon Johnson School	68%	64%
John Dibert Community School	60%	55%
Joseph A. Craig School	29%	21%
KIPP Believe College Prep (Phillips)	82%	84%
KIPP Central City Academy	75%	96%
KIPP McDonogh 15 School For The Creative Arts	74%	54%
L. B. Landry High School	36%	34%
Lake Forest Elementary Charter School	100%	100%
Langston Hughes Academy Charter School	58%	64%
Lusher Charter School	97%	99%
Martin Behrman Elementary School	94%	93%
Mary D. Coghill Elementary School	41%	44%
McDonogh #28 City Park Academy	56%	31%
McDonogh #32 Elementary School	35%	47%
McDonogh #35 Senior High School	71%	49%

<b>School Name</b>	<b>8<sup>th</sup> Grade ELA <i>Basic and Above</i></b>	<b>8<sup>th</sup> Grade Math <i>Basic and Above</i></b>
<b>McDonogh #42 Elementary Charter School</b>	<b>31%</b>	<b>31%</b>
<b>Milestone SABIS Academy Of New Orleans</b>	<b>84%</b>	<b>73%</b>
<b>Miller-McCoy Academy</b>	<b>54%</b>	<b>60%</b>
<b>Nelson Elementary School</b>	<b>52%</b>	<b>43%</b>
<b>Nola College Prep Charter School</b>	<b>43%</b>	<b>47%</b>
<b>P. A. Capdau School</b>	<b>48%</b>	<b>49%</b>
<b>Samuel J. Green Charter School</b>	<b>42%</b>	<b>56%</b>
<b>Sarah Towles Reed Elementary School</b>	<b>30%</b>	<b>22%</b>
<b>Schwarz Alternative School</b>	<b>0%</b>	<b>0%</b>
<b>Scitech Academy At Laurel Elementary</b>	<b>33%</b>	<b>38%</b>
<b>Sophie B. Wright Institute Of Academic Excellence</b>	<b>63%</b>	<b>70%</b>
<b>William J. Fischer Elementary School</b>	<b>66%</b>	<b>83%</b>

<b>School Name</b>	<b>10<sup>th</sup> Grade GEE Basic and Above</b>	<b>10<sup>th</sup> Grade GEE Basic and Above</b>
<b>Abramson Science &amp; Technology Charter School</b>	<b>56%</b>	<b>66%</b>
<b>Algiers Technology Academy</b>	<b>54%</b>	<b>64%</b>
<b>Benjamin Franklin High School</b>	<b>99%</b>	<b>99%</b>
<b>Dr. M.L.K. Charter School For Science &amp; Technology</b>	<b>59%</b>	<b>86%</b>
<b>Edna Karr Secondary School</b>	<b>60%</b>	<b>68%</b>
<b>Eleanor McMain Secondary School</b>	<b>71%</b>	<b>61%</b>
<b>G.W. Carver High School</b>	<b>17%</b>	<b>47%</b>
<b>Greater Gentilly High School</b>	<b>44%</b>	<b>61%</b>
<b>Hope Academy</b>	<b>21%</b>	<b>7%</b>
<b>International High School</b>	<b>42%</b>	<b>45%</b>
<b>John McDonogh Senior High School</b>	<b>10%</b>	<b>19%</b>
<b>Joseph S. Clark Senior High School</b>	<b>11%</b>	<b>12%</b>
<b>L. B. Landry High School</b>	<b>33%</b>	<b>32%</b>
<b>Lusher Charter School</b>	<b>99%</b>	<b>98%</b>
<b>McDonogh #35 Senior High School</b>	<b>59%</b>	<b>72%</b>
<b>Miller-McCoy Academy</b>	<b>28%</b>	<b>35%</b>
<b>New Orleans Charter Science And Math Academy</b>	<b>79%</b>	<b>84%</b>
<b>New Orleans Charter Science And Mathematics</b>	<b>61%</b>	<b>75%</b>
<b>O.P. Walker Senior High School</b>	<b>61%</b>	<b>92%</b>
<b>Priestley School Of Architecture/Construction</b>	<b>14%</b>	<b>29%</b>
<b>Sarah Towles Reed Senior High School</b>	<b>29%</b>	<b>34%</b>
<b>Schwarz Alternative School</b>	<b>None Reported</b>	<b>9%</b>
<b>Sojourner Truth Academy</b>	<b>21%</b>	<b>33%</b>
<b>Sophie B. Wright Institute Of Academic Excellence</b>	<b>70%</b>	<b>57%</b>
<b>Thurgood Marshall Early College High School</b>	<b>55%</b>	<b>69%</b>
<b>Walter L. Cohen High School</b>	<b>14%</b>	<b>20%</b>
<b>Warren Easton Senior High School</b>	<b>69%</b>	<b>77%</b>